

Iwakuni City Yuu machi

1 Teppan bar RISO e villaggio



Enjoy seasonal ingredient iron-grill Italian cuisine focusing on meat and fish with items like pasta and pizza.
 2-2-6, Chuo, Yuu-machi, Iwakuni-shi ☎ 0827-93-4075
 Sun~Fri 6pm~10pm, Sat 6pm~12am
 Wednesday lot 4 cars

2 M Gradation



With its lineup of products like popular original handcrafted Carp goods, handmade items, beauty, and nail items, this shop tickles the inner female heart.
 1-5-17, Chuo, Yuu-machi, Iwakuni-shi ☎ 090-1189-8395
 10am~5pm Shopping Street parking lot at north side
 usually Saturday, Sunday, and holidays (irregular holidays)
 Online Shop <http://mgradation.thebase.in/>

4 iroherb shop



A lifestyle shop offering furniture, items, and foods to color your daily life.
 3915, Yuu-machi, Iwakuni-shi ☎ 0827-63-1708
 11am~5pm Wednesday available
<http://iroherb.com>

5 iroherb café



A café serving seasonal foods in a sophisticated interior design ambiance.
 3915, Yuu-machi, Iwakuni-shi ☎ 0827-63-1687
 11am~5pm (L.O. 4:30pm, Lunch 11am~2pm)
 ※Only lunch reservations allowed
 Wednesday available <http://iroherb.com>

9 Manmaru Pokke



Sophisticated but cute quilts you can use in everyday life. The quilt lessons are also popular.
 5-12-5, Minami, Yuu-machi, Iwakuni-shi ☎ 0827-63-2731
 Wed~Fri 10am~4pm Sat~Tue, holiday
 available ※classroom reservation system
mannmaru.cart.fc2.com

13 Ippachi



A meal-set restaurant where you can see all the way to Shikoku from the counter on a clear day. The ramen is delicious.
 2698-1, Shinto, Yuu-machi, Iwakuni-shi ☎ 0827-63-2217
 10am~8pm usually Thursday
 available <http://www.r188.jp>

3 Yuu Eatery



A long-life mom-and-pop shop. The lunch set is amazingly popular! Sometimes it sells out if you don't get there quickly.
 1-6-15, Chuo, Yuu-machi, Iwakuni-shi ☎ 0827-63-1917
 Lunch 12pm~2pm, Dinner 5pm~9pm
 Wednesday lot 6 cars

6 Kitchen Cotelette



A shop known for selections like crispy breaded pork fillet, skirt steak, and chicken nanban.
 1-9-21, Minato, Yuu-machi, Iwakuni-shi ☎ 0827-93-4135
 Lunch 11:30am~2pm,
 Dinner 5:30pm~9:30pm (L.O. 9:15pm)
 Thursday available (Yu-Kenzai parking lot opposite)

10 Maimu



Enjoy some soothing and relaxing time in the afternoon! A café during the daytime, with a daily lunch special at 650 yen. Transforms into an izakaya style bar at night, with a party plan option available.
 1-7-13, Chuo, Yuu-machi, Iwakuni-shi ☎ 0827-63-5016
 Lunch 9am~3pm, Dinner 6pm~11pm
 Sunday, and Holidays lot 3 cars

14 Chikara Sushi



The jumbo sushi is big in size and flavor. Enjoy gatherings with friends and families here.
 2089, Shinto, Yuu-machi, Iwakuni-shi ☎ 0827-63-3091
 11am~8pm irregular holidays
 lot 20 cars



7 Lifestyle Items & Coffee: Mori No Kobako



A small item and tea shop standing amidst bountiful nature. A forest-nestled calming spot where visitors can enjoy a different view for each season.
 3225-1, Yokomichi, Yuu-machi, Iwakuni-shi ☎ 0827-63-1410
 10:30am~6:30pm
 Tuesday lot 20 cars morinokobako.ftw.jp

11 Hamayoshi



Amazingly fresh! The lunch set plate with fish as the main dish is very popular! Enjoy large portions of local fish and vegetables.
 2-1-10, Chuo, Yuu-machi, Iwakuni-shi ☎ 0827-63-5100
 Monday available
 Lunch 11am~2pm, Dinner 5pm~9pm
 ※Parties for 5~15 people groups available

15 Modern Times



Based on reliable expert opinion, this shop performs valuation, consulting, buying, and selling of items ranging from slightly-old small items to rare and valuable old art pieces.
 2-7-20, Chuo, Yuu-machi, Iwakuni-shi ☎ 090-1017-0704
 12pm~5:15pm irregular holidays Not available
 ※Service outside business hours possible with prior reservation.

8 Yakiniku Yatchan



Located near Yuu Station. The special thick-slice boneless rib strips are amazingly popular! Having ramen after eating meat is a luxurious treat!
 2-2-5, Minami, Yuu-machi, Iwakuni-shi ☎ 0827-63-2989
 Lunch 11:30am~1pm, Dinner 5pm~10pm
 Monday (if it's holiday, Tuesday) lot 10 cars
 ※We have a tatami room for around 15 people (reservation required)

12 Karaoke Snack Orange



Enjoy some soothing and relaxing time in an at-home atmosphere! Close off the day at Orange! A casual and fun bar.
 2-1-6, Chuo, Yuu-machi, Iwakuni-shi ☎ 0827-63-5988
 7pm~11pm Sunday and Wednesday
 available
 ※You can charter from one to 15 people.

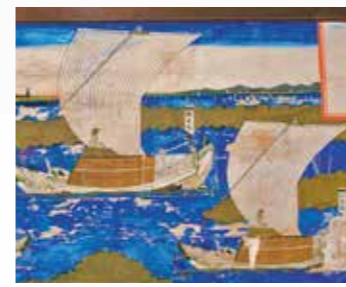
16 Okonomiyaki Restaurant Kobuta-chan



35 years of providing the best in thick iron grills and flame strength. Grilling up the ultimate okonomiyaki with excellent support from our customers.
 1-12-13, Chidorigaoka, Yuu-machi, Iwakuni-shi ☎ 0827-63-0626
 Wednesday, 1st&2nd Tuesday
 Lunch 10:30am~3pm, Dinner 5pm~7:30pm lot 4 cars

History

Vestiges of olden days that remain on the land today. Journey through the history that made the city what it is today.



Marine shipping / Yuu-machi

In Yuu-machi of old, marine shipping that transported goods from Seto Inland Sea to every region in Japan in boats called Kitamaebune was big business. Over 50 large sailing ships were active, and the economy thrived. Yuu Museum of History & Folklore, which was built in the shape of a boat to symbolize that history, preserves a great deal of materials illustrating the history of the region and the daily lifestyles of the people.



Kurakake Battle / Kuga-machi

The Kurakake Castle was the castle estate of Ouchi Clan vassal Sugi Takayasu. In the Warring States Period, Mori Motonari planned an attack on Suo Nagato. The first clash in this conquest was the Kurakake Battle. Takayasu engaged Mori's 7,000 soldier invasion force with his 2,600 subordinates, and was vastly outnumbered. He was sadly killed in battle, and his castle fell. Today, a monument called "Senninzuka" (Thousand Person Mound) stands in commemoration.



Shikyo War & Yugekitai / Shuto-machi

Yugekitai was a battalion composed of townspeople, farmers, and military personnel put together by Choshu Domain retainer Kijima Matabei towards the end of the Tokugawa shogunate. It was ranked together with the Kiheitai militia of Takasugi Shinsaku. In preparation for a shogunate Choshu expedition, a honjin (residence for government officials) was placed in Tsukekiji Temple in 1865. Yugekitai was active as the main fighting unit for the Choshu Domain forces in Shikyo War, which occurred the following year. On the temple grounds, a stone monument remains displaying an inspirational poem for Yugekitai by Takasugi Shinsaku.

Events

There are so many exciting events everyone can enjoy! Special events incorporating the characteristics of each region.



Waterside beach fun (Shiokaze Park Minato Oasis Yuu) / Yuu-machi (Mid-July to mid-August)

Held at a general interaction terminal easily accessed from alongside Route 188. The area has a 450 meter artificial beach, exercise walkway, event space, and meet-and-greet interaction hall. There is shark protection netting and life guard staff on duty during the summer, making this a safe place to enjoy the beachside water. It also scores high in convenience with facilities like bathrooms, showers, and dressing rooms.



YOU-Yuu-Fest / Yuu-machi (Last Saturday in October)

This is a performance stage event with wind-instrument music, Shinto music and dancing, and taiko drum performances by daycare children and junior high school students and a collection of vendors selling local Yuu produced bounty from the mountain and sea. Various kinds of bazaars are also held. This is a big event everyone looks forward to yearly. One of the most popular events is a fish grabbing contest. Participants get inside a large fish tank and try to grab big fish with their bare hands. And of course you get to keep the fish you catch!



Kurakake Castle Festival / Kuga-machi (3rd Sunday in November)

A festival teaming with the romance of the Warring States era some 460 years ago. The "Kurakake Battle Call-to-Arms Picture Scroll" and the "Kurakake Warrior March" reenact the march to battle when Kurakake Castle Lord Sugi Takayasu fought Mori Motonari. The sight of a battalion of fifty soldiers clad in armor and helmets taking the battle field is amazing. It is the highlight of the festival. There are also many stage performance events, with performances including wind-instrument music from local school students and folk-entertainment.



Shuto Meat Fair / Shuto-machi (Last Sunday of November)

The impressive whole-roasted barbecue of Shutomachi brand beef "Takamori Wagyu Beef" is wonderfully filling. Enjoy the flavor of meat renowned for its high quality. This "food fair" also features all sorts of other delectable selections like Kashiwa chicken rice and pork soup. It is always full of excited visitors every year. Also, the specialty product sales, lotteries, and all sorts of stage events are fun.

※Contact for details on the festival dates.

Tons of things to see in Iwakuni City West!

WALK & EAT MAP



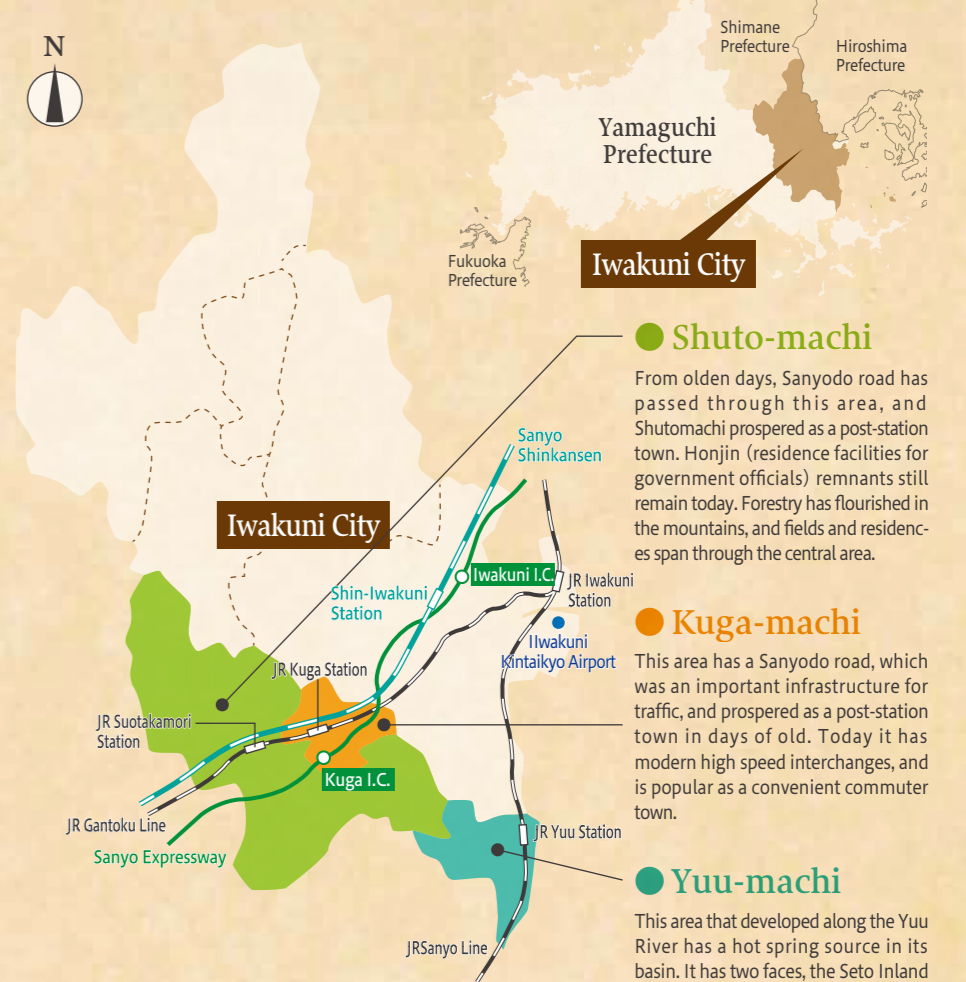
Iwakuni West Area

Check here for special sightseeing information focusing on **Yuu, Kuga, Shuto** gourmet cuisine with recommendations for shops selling all sorts of fun things as well!

Issued by /Iwakuni-nishi Commerce and Industry Association Wowan section 1568-2, Shimokubara, shuto-machi, Iwakuni-shi Tel /0827-84-0183
 This Pamphlet was created as a project for Small business support in eastern Yamaguchi Prefecture.
 ※The information is current as of January 2019.

Access

Iwakuni City touches the prefectural boundary between western Yamaguchi Prefecture and Hiroshima Prefecture. Within the city, the Iwakuni West Area is home to the ocean-facing Yuu-machi and the greenery-filled Kuga-machi and Shuto-machi. This is a region that serves up the delicious bounty of the mountains and ocean.



Access to inner Iwakuni City

Access into the downtown area takes about 30 to 60 minutes by car or train. In addition to the Sanyo Expressway and a shinkansen service, the opening of the Iwakuni Kintaiyo Airport (with flights to Tokyo-Haneda and Okinawa) has dramatically improved access.	Sanyo Expressway	Iwakuni I.C., Kuga I.C.
	JR Sanyo Shinkansen	Shin-Iwakuni Station
	JR Sanyo Main Line	JR Iwakuni Station ※at 5 Station
	Airplane	Iwakuni Kintaiyo Airport